

SUNKISSED

*Art Direction Isabelle Vander Heyde & Stephanie Fiz
Photography Volvoretta by Jimena San Miguel*

Cold air, stark light,
I'm not **afraid** of heights!
Sun plays hide and seek,
icy kisses on my cheeks.
Day grows slow,
TIME to go.





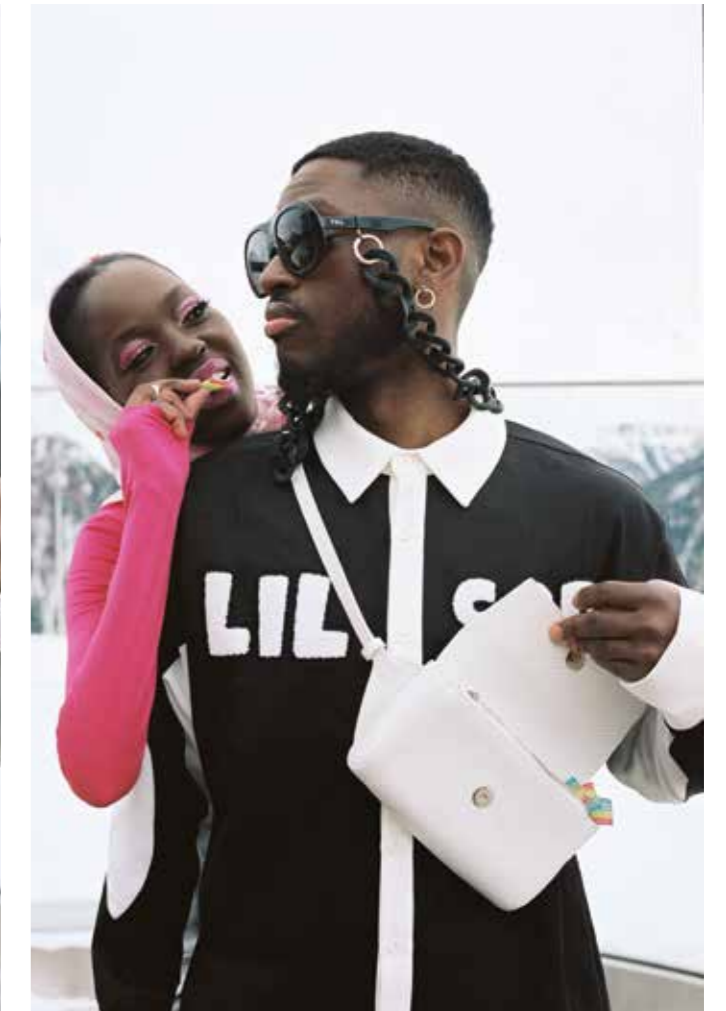
Marty: snow pants and jacket, **SEBNEM GUNAY**. Sunglasses, **VERSACE**. Jewellery, **ATELIER PALMIER**.
Nola: sweater, sunglasses and vest, **ELLE AND RAPHA**. Own pants, Snow boots, **SOREL**.
Previous page: Marty: outdoor suit and jacket, **SEBNEM GUNAY**. Jewellery, **ATELIER PALMIER**.
Maëlle: outdoor suit, **ELLE AND RAPHA**. Nick: sweater and joggers, **LIL SEB**. Sunglasses, **VINTAGE**.



Perfume, **J'EMME**. Glove, **HESTRA**.
Nick: joggers and sweater, **LIL SEB**. Scarf, **CHARLOTTE BEAUDE**. Cap, **ATELIER ACAN**. Jacket, **LIL SEB**.



Marty: snow pants and thermal pullover, **SEBNEM GUNAY**. Ikon Clutch bag, **KAAL**.
Scarf, **CHARLOTTE BEAUDE**. Jewellery, **ATELIER PALMIER**.
Nick: joggers and sweater, **LIL SEB**. Scarf, **CHARLOTTE BEAUDE**. Cap, **ATELIER ACAN**. Jacket, **LIL SEB**.
Sunglasses, **ORIGINAL TRINITY MATRIX BY WARNER BRO'S**.
Left page: Marty: snow pants and jacket, **SEBNEM GUNAY**.



Marty: scarf, **CHARLOTTE BEAUDE**. Outdoor suit, **SEBNEM GUNAY**. Jewellery, **ATELIER PALMIER**.
Nick: Ikon Clutch bag, **KAAI**. Sunglasses, **TOL EYEWEAR**. Sweatshirt, **LIL SEB**.
Left page: Marty: scarf, **CHARLOTTE BEAUDE**. Outdoor suit, **SEBNEM GUNAY**. Jewellery, **ATELIER PALMIER**.
Mini Arch bag with resin chain, **KAAI**. Perfume, **J'EMME**.



Marty: scarf, **CHARLOTTE BEAUDE**. Outdoor suit and jacket, **SEBNEM GUNAY**. Jewellery, **ATELIER PALMIER**.
Mini Arch bag with resin chain, **KAAI**. Stephanie: coat, **SEBNEM GUNAY**.
Isabelle: snow pants and jacket, **SEBNEM GUNAY**. Nick: joggers and jacket, **LIL SEB**.
Right page: Nick: joggers and jacket, **LIL SEB**. Sunglasses, **TOL EYEWEAR**.
Marty: outdoor onesie and jacket, **SEBNEM GUNAY**.



Left: Marty: body, **SEBNEM GUNAY**. Socks, **ELLE AND RAPHA**.
Right: Marty: t-shirt and socks, **ELLE AND RAPHA**. Underwear, **AMERICAN VINTAGE**. Jewellery, **ATELIER PALMIER**.
Maëlle: t-shirt and beanie, **ELLE AND RAPHA**.
Left page: Marty: scarf, **CHARLOTTE BEAUDE**. Outdoor suit and jacket, **SEBNEM GUNAY**.
Jewellery, **ATELIER PALMIER**. Mini Arch bag with resin chain, **KAAI**.
Nick: joggers and jacket, **LIL SEB**. Sunglasses, **TOL EYEWEAR**.
Hair & Make-up: Sanne Schoofs (Mac cosmetics and Likami skincare). Models: Nick Mayor & Marty Wills & Baby Maëlle.
Logistics & production: The Sybarite Flamingo with the support of Hotel Das Central Sölden.